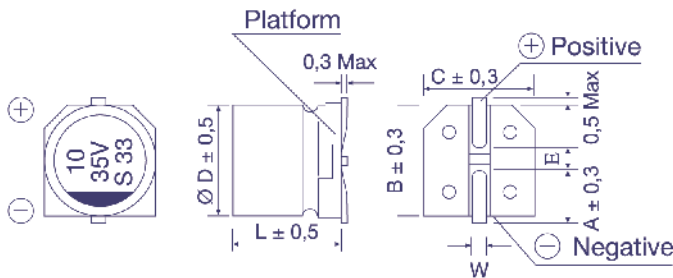


Order Code **SMD, Radial, Snap-In**

EC	R	1C	PT	101	M	FF	25	0611
Technology	Terminal Type	Rated Voltage Code	Series Code	Capacitance Code (in μF)	Capacitance Tolerance	Lead Form	Terminal/Pitch Size	Dimension
EC = Electric Capacitor	SMD = V	For coding please refer to the pages of ratings	CD VS = BS	0,47 = R47	$\pm 20\%$ = M	SMD:		4x7 = 0407
	Radial = R		CD VH = VH	1,0 = 010	$\pm 10\%$ = K	Taped = FF	Terminal = T2	5x11,5 = 0511
PC = Polymer Capacitor	Snap-In = S		CD VZ = VZ	2,2 = 2R2	+30 / -10% = Q	Radial:		
		CD 261 = LK	100 = 101	+50 / -10% = T	Long Lead = LL	2,0mm = 20		35x80 = 3580
		CD 261X = QX	1000 = 102		Cut 5,0mm = CB	2,5mm = 25		45x100 = 45100
		CD 262 = QM	10000 = 103		Cut 4,5mm = CC	3,5mm = 35		
		CD 263 = BK			Cut 4,0mm = CD	5,0mm = 50		
		CD 269 = PH			Cut 3,5mm = CE	7,5mm = 75		
		CD 281 = LL			Cut 3,0mm = CF	10,0mm = 10		
		CD 284 = XY			on request: alternative lead forms (axial, 90° - angle, others)			
		CD 287 = GC				12,5mm = 12		
		CD 28L = QL			Snap-In:			
		CD 293 = BZ			4,0mm Pin Length = T4	2 Pin = P2		
		CD 294 = BW			6,3mm Pin Length = T6	3 Pin = P3		
		CD 295 = BC			Soldering Pin = S4	4 Pin = P4		
		CD 296 = KC				5 Pin = P5		
		CD 297 = BB			preferred			
		CD 299 = PG						
		CD 29D = HR						
		CD 29H = QH						
		CD 29L = QL						
		HCP = CP						
		HPM = PM						
		HVC = VC						

Technical Specification **SMD Type**

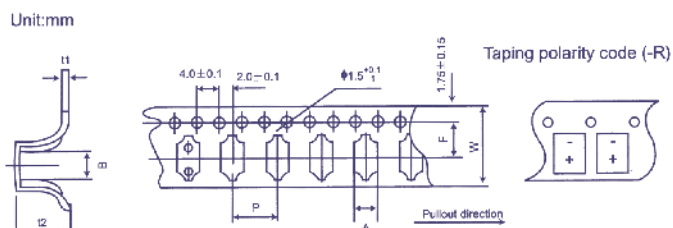
Dimensions



Ø D x L	4x5,4	5x5,4	6,3x5,4	6,3x7,7	8x10,5	8x11,8	10x10,5	10x12,7
A	1,8	2,1	2,4	2,5	2,9	2,9	3,2	3,2
B	4,3	5,3	6,6	6,6	8,3	8,4	10,3	10,4
C	4,3	5,3	6,6	6,6	8,3	8,4	10,3	10,4
E	1,0	1,3	2,2	2,2	3,1	3,1	4,5	4,5
L	5,4	5,4	5,4	7,7	10,5	11,8	10,5	12,7
W	0,5 - 0,8				0,7 - 1,1			

in mm

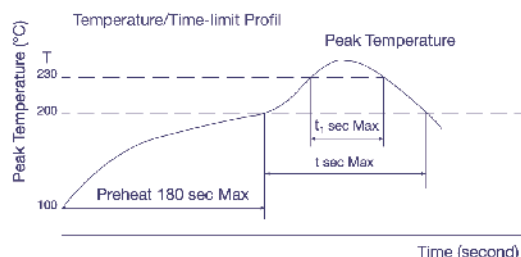
Taping Dimensions



Size (DxL)	w ± 0,3	A ± 0,2	B ± 0,2	P ± 0,1	t2 ± 0,2	F ± 0,1	t1 ± 0,1
4 x 5,4	12,0	5,0	5,0	8,0	5,8	5,5	0,4
5 x 5,4	12,0	6,0	6,0	12,0	5,8	5,5	0,4
6,3 x 5,4	16,0	7,0	7,0	12,0	5,8	7,5	0,4
6,3 x 7,7	16,0	7,0	7,0	12,0	8,4	7,5	0,4
8 x 10,5	24,0	8,7	8,7	16,0	11,0	11,5	0,5
8 x 11,8	24,0	8,7	8,7	16,0	12,3	11,5	0,5
10 x 10,5	24,0	10,7	10,7	16,0	11,0	11,5	0,5
10 x 12,7	24,0	10,7	10,7	16,0	14,0	11,5	0,5

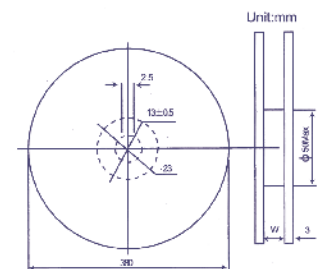
in mm

Soldering Profile (Aluminium Electrolytic Capacitors)



Diameter	w	D
4; 5	14 ± 1	50 ± 1
6,3	18 ± 1	50 ± 1
8; 10	25 ± 1	50 ± 1
Polymer	25 ± 1	80 ± 1

in mm



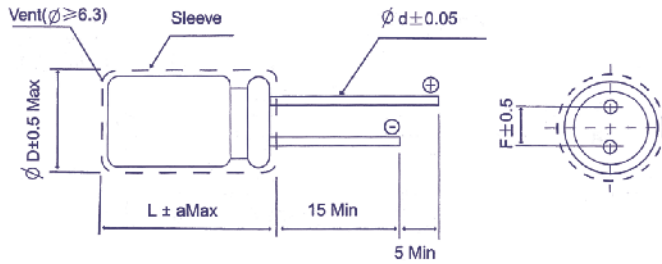
Allowable Range of Peak Temperature

Size	T (°C)	t (second)	t ₁ (second)
Ø 4 ~ 6,3	250	90	40
Ø 8 x 10,5	240	90	30
Ø 10 x 10,5	235	60	30

For more details or Soldering Profiles of Radials or Polymer-Capacitors please contact our local Sales Offices.

Technical Specification Radial Type

Dimensions for loose, long-lead type, (bulk)
Order Code: LL



L	L ≤ 7					L ≥ 11									
∅ D	3	4	5	6,3	8	5	6,3	8	10	12,5	16	18	20	22	25
F	1	1,5	2,0	2,5	3,5	2,0	2,5	3,5	5,0		7,5	10,0	12,5		
∅ d	0,4	0,45				0,5			0,6		0,8		1,0		
a _{Max}	1,0					2,0									

in mm

Dimensions for Ammopack taping
Order Code: FF (FD)

Code	Case Range		Dimensions				Form	Ammopack
	∅ D	L (max)	H ± 0,75	Ho ± 0,5	F ± 0,5	P ± 0,1		
FF	4 ~ 6	13	18,5	-	2,5	12,7	A	
	8	13	18,5	-	3,5	12,7		
	4 ~ 8	7	17,5	16	5	12,7	B	
	5 ~ 6,3	13	18,5					
	8	22	20,0					
		10	22	18,5	-		A	
	12,5	27	18,5	-	15,0			
FD	12,5	27	18,5	-		25,4	C	
FF	16 ~ 18	27	18,5	-	7,5	30,0	C	

in mm

Dimensions for loose, short cut leads, (bulk)
Order Code: CC (CB,CD,CE,CF)

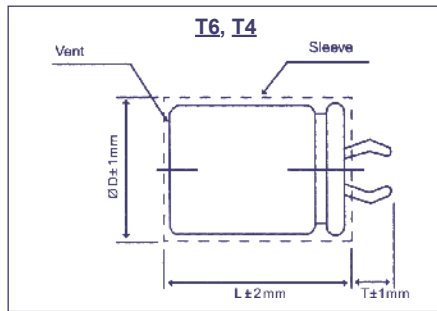
Straight Lead						Bended Lead	
Code	CB	CC	CD	CE	CF		
I	5,0 ± 0,5	4,5 ± 0,5	4,0 ± 0,5	3,5 ± 0,5	3,0 ± 0,5		

preferred

in mm

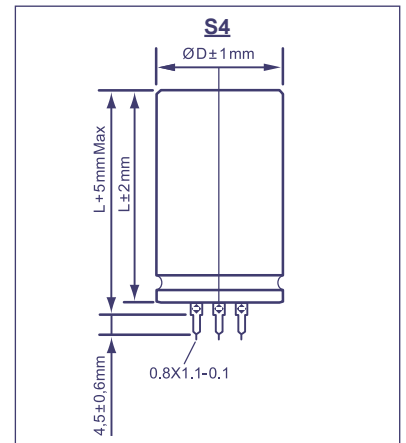
Technical Specification **Snap-In Type**

Pin Type: Snap-In
Order Code: T6, T4

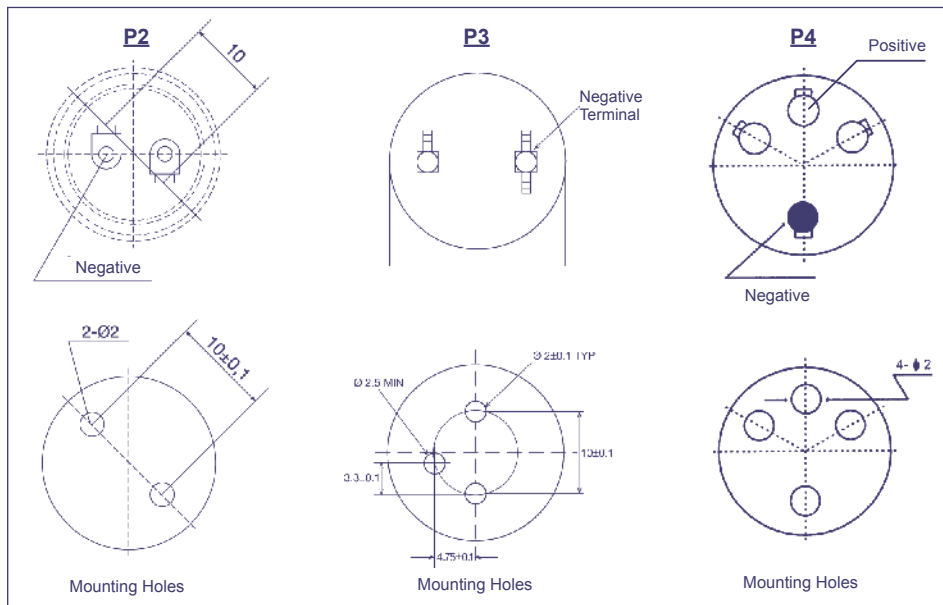


Terminal	T6	T4
Pin Length T	6,3	4,0

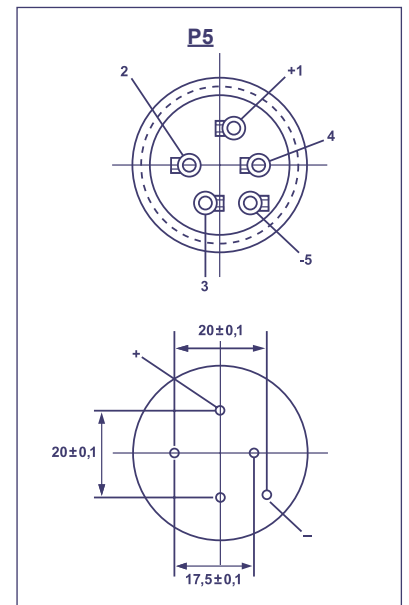
Pin Type: Soldering
Order Code: S4



Snap-In Terminal
Order Code: P2, P3, P4



Soldering Terminal
Order Code: P5



P3 only T4 Terminal

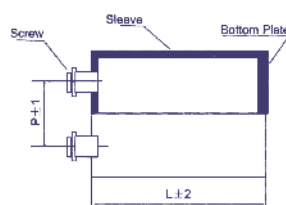
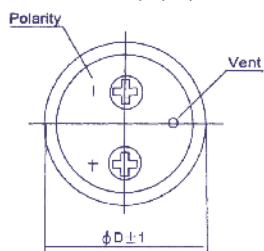
Order Code **Screw Type**

EC	G	1C	BP	101	M	B	E	160	A361
Technology	Terminal Type	Rated Voltage Code	Series Code	Capacitance Code	Capacitance Tolerance	Mounting	Diameter	Length	For Terminal Code see tables below
EC = Electrolytic Capacitor	Screw = G	For coding please refer to the pages of ratings	CD 135 = BP	100 = 101	±20% = M	Bolt = B	36 = A	53 = 053	
			CD 136 = PK	1000 = 102	±10% = K	No double sleeve = N	40 = B	65 = 065	
			CD 137 = PX	10000 = 103	+30 / -10% = Q	2 stoppers bracket+double sleeve* = I	51 = C	96 = 096	
			CD 138 = PC		+20 / -0% = R	3 stoppers bracket+double sleeve* = Y	64 = D	100 = 100	
			CD 139 = BL		+50 / -10% = T	No bracket, but double sleeve* = D	77 = E	115 = 115	
				preferred	* Double sleeve for diameter ≥ 51 only		90 = F	236 = 236	
							101 = G		

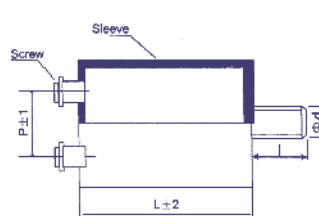
Technical Specification **Screw Type**

Dimensions

Standard Housing
Order Code: I, Y, D, N



Bolt Housing
Order Code: B



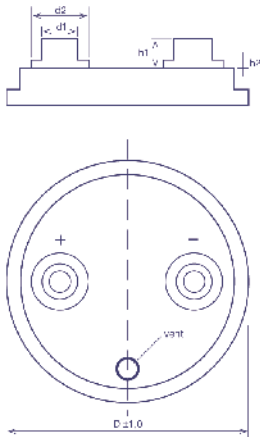
Ø D	Ø d	l
Ø 36	M8	12
≥ Ø 51	M12	16

in mm

Terminal Form

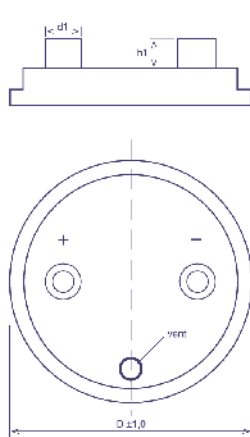
Terminal A

Order Code: AXXX



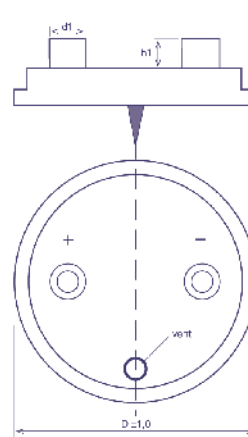
Terminal B

Order Code: BXXX



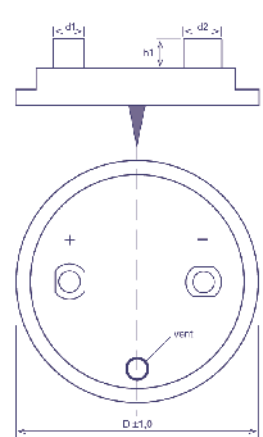
Terminal C

Order Code: CXXX



Terminal D

Order Code: DXXX



Tolerances of d1, d2, h1, h2 : +/- 0,3 mm

Code	ØD	Screw	Pitch P	d1	d2	h1	h2
A361	36	M5	12,7	8	11	6,8	1,8
A362	36	10 - 32	12,7	8	11	6,8	1,8
A511	51	M5	21,8	10	13	6,8	1,8
D551	55	M5	21,8	10	13	5,5	0
A641	64	M5	28,2	10	15,5	6,8	1,8
A642	64	M5	28,2	15	20	7,3	3,5
A643	64	1/4 - 28	28,2	15	20	7,3	3,5
B641	64	1/4 - 28	28,2	17,2	0	6,4	0
D641	64	M5	28,2	13,0	15,0	7,14	0
A771	77	M5	31,4	10	15,5	6,3	1,3
A772	77	M6	31,4	10	15,5	6,3	1,3
B771	77	M6	31,4	17,2	0	3,17	0

Code	ØD	Screw	Pitch P	d1	d2	h1	h2
B772	77	M6	31,4	17,2	0	6,4	0
B773	77	M8	31,4	17,2	0	3,17	0
B774	77	M5	31,4	17,2	0	6,4	0
C771	77	M5	31,4	17,2	0	3,5	0
C772	77	M6	31,4	17,2	0	3,5	0
C773	77	M5	31,4	17,2	0	5,5	0
C774	77	M5	31,4	17,2	0	6,4	0
A901	90	M5	31,4	10	15,5	6,3	1,3
A902	90	M6	31,4	10	15,5	6,3	1,3
B901	90	M6	31,4	17,2	0	6,4	0
B902	90	M5	31,4	17,2	0	6,4	0
A101	101	M8	41,5				

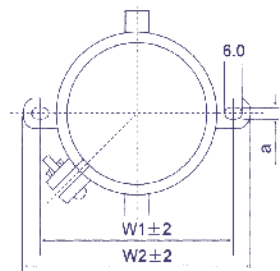
preferred, other forms on request

in mm

Bracket Mounting

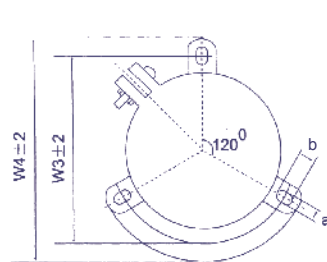
I-Type

Ø D 36-90



Y-Type

Ø D 51-101



Ø D	W1	W2	W3	W4	a	b
36	48,0	58,0	-	-	3,5	-
51	68,0	80,0	63,5	73,0	4,5	7,0
64	81,0	93,0	76,2	85,1	4,5	7,0
77	93,5	106,0	88,9	98,4	4,5	7,0
90	108,0	120,5	101,6	111,1	4,5	7,0
101	-	-	115,0	127,0	5,0	8,0

preferred

in mm

Height of brackets: ~30mm

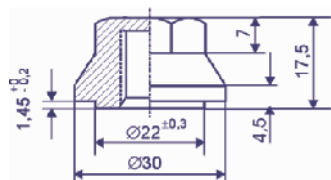
Terminal Detail



Screw Definition

Hexagon-Head	M5x10
Hexagon-Head	M6x12
Hexagon-Head	M8x16

Accessories for Bolt Mounting



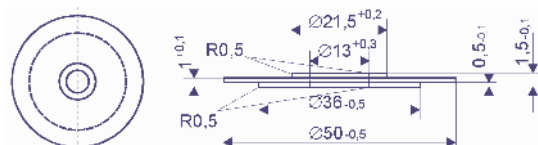
Cap Nut

Order Code: CNN30M12

Insulation Washer

Order Code: K100-ISO-50

Ø D 51, 64



Insulation Washer

Order Code: K100-ISO-77

Ø D 77, 90

